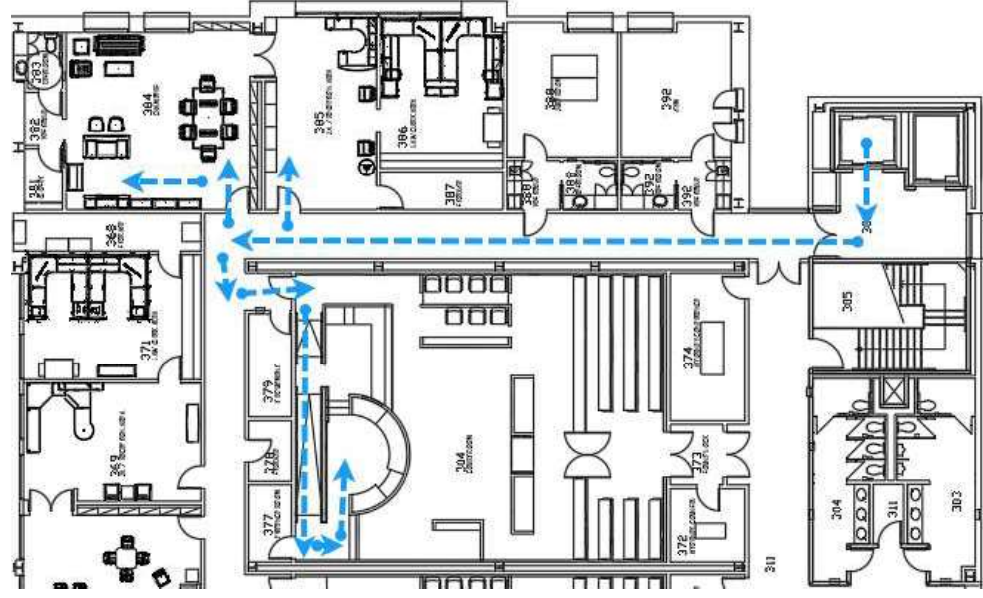


Path of Travel

3rd Floor
Judge's
Chambers
Furniture
Layout

Hallway
carpet
existing
conditions



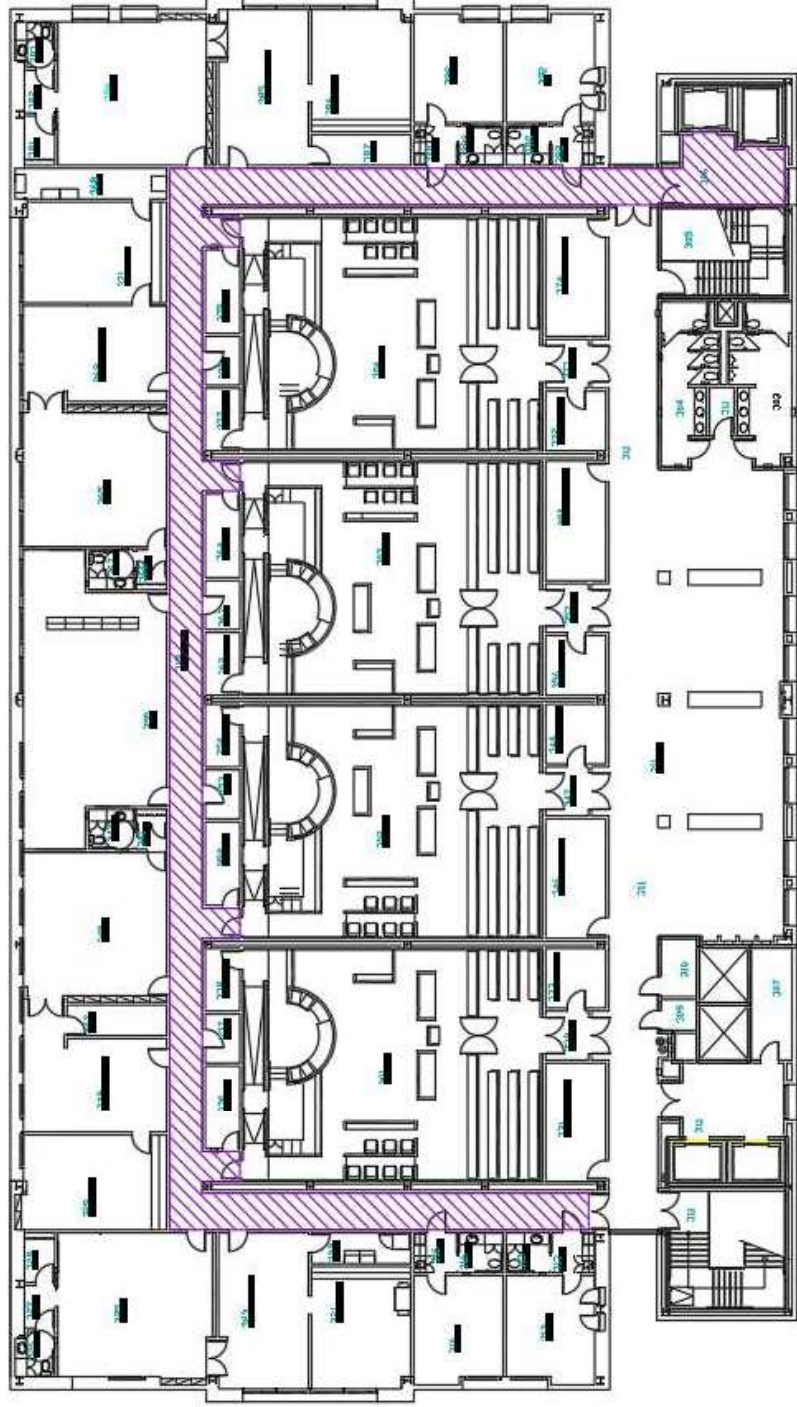
Hallway from elevator
to chambers-
approximately 90'



Hallway from Judge B
Chambers to Judge Reyes
Bordeaux Chambers
Approximately 180'

Hallway

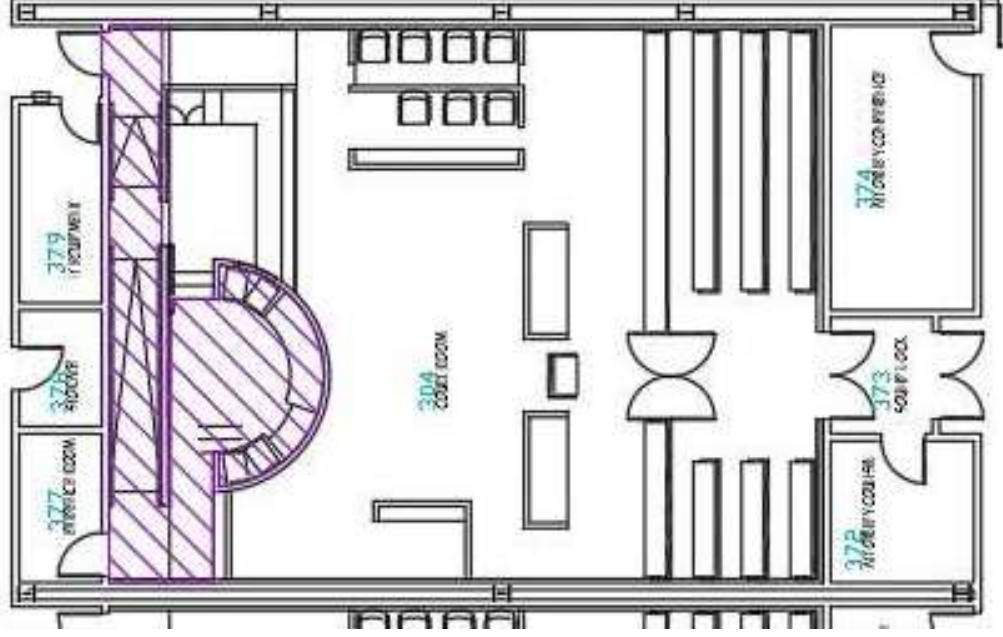
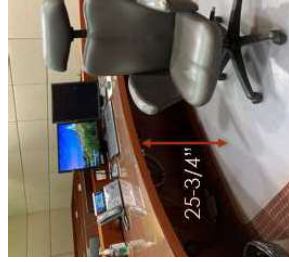
3rd Floor Flooring



The current carpet tiles with cushion backing. There is 90' to chambers 385 and 180' to go from Chambers 385 to 325. Replace +/- 2,100 Sq Ft of carpet to LVT

Courtroom

3rd Floor Flooring



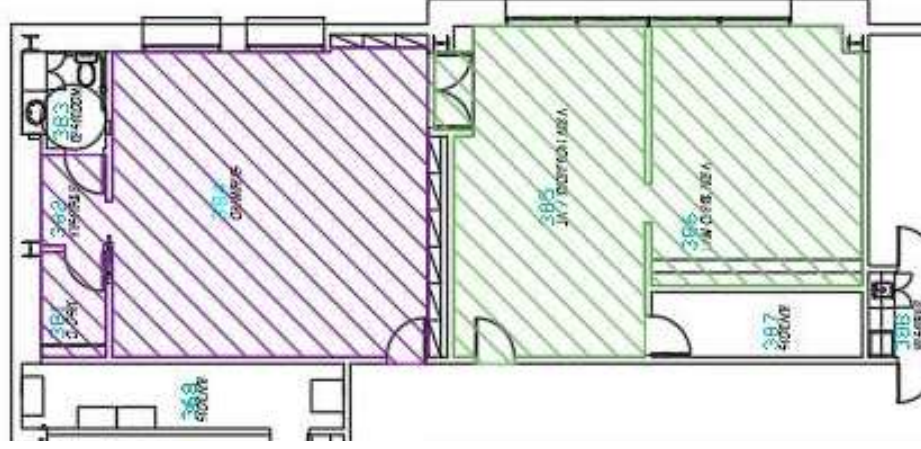
Current carpet tiles with cushion backing, replace +/- 300 Sq Ft of carpet to LVT

Transition LVT to existing carpet tiles

Courtroom carpet to be saved for attic stock on the 1st floor

Chambers

3rd Floor Flooring



The current broadloom carpet with padding replace +/- 660 Sq Ft of carpet with LVT in the Judge's Chambers area.

The current broadloom carpet with padding in entry and Law Clerk areas replace +/- 710 Sq Ft with carpet tiles with no cushion backing.